



INDOFINE Chemical Company, Inc.

121 Stryker Lane, Bldg. 30, Suite 1 • Hillsborough, NJ 08844 • U.S.A.

Phone: (908) 359-6778 • FAX: (908) 359-1179

website: www.indofinechemical.com

e-mail: chemical@indofinechemical.com

CERTIFICATE OF ANALYSIS

Catalog Number: 021326S

Product Name: **5,6,7,3',4'-PENTAMETHOXYFLAVONE with HPLC**
(Sinensetin)

CAS Number: [2306-27-6]

Lot Number: 2206688

Chemical Formula: C₂₀H₂₀O₇

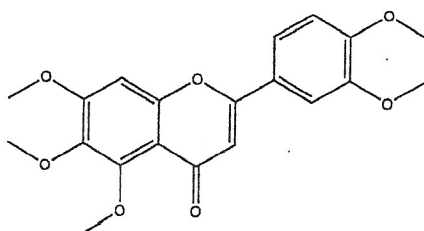
Molecular Weight: 372.38

Appearance: Light yellow powder

Water Content: 0.06%

Storage: Store in a cool, dry place

Purity(HPLC): 99.27%



Prepared by:
Ramesh Mandadi
Ramesh Mandadi
Director of Operations

Reviewed and Approved by:
Sujata Moton
Sujata Moton
VP



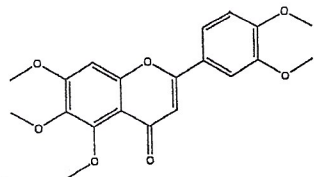
INDOFINE Chemical Company, Inc.

121 Stryker Lane, Bldg. 30, Suite 1 • Hillsborough, NJ 08844 • U.S.A.

Phone: (908) 359-6778 • FAX: (908) 359-1179

website: www.indofinechemical.com

e-mail: chemical@indofinechemical.com



HPLC ANALYSIS

Catalog No.: 021326S

Product Name: 5,6,7,3',4'-Pentamethoxyflavone

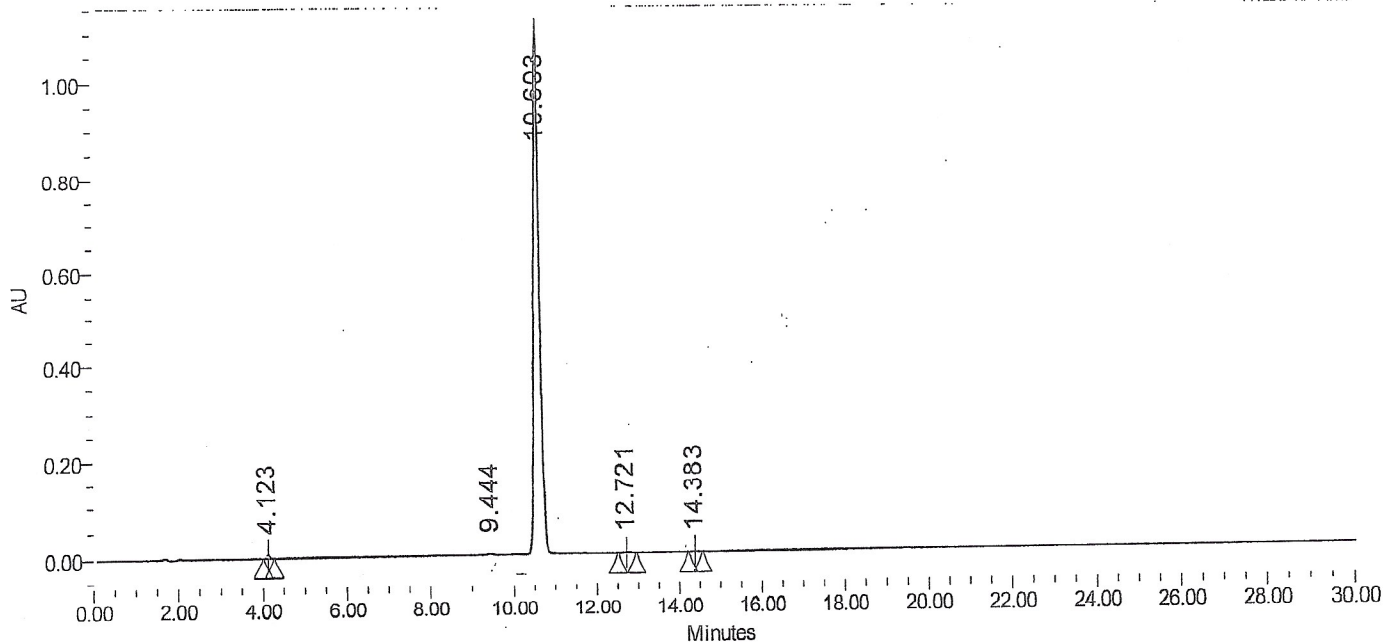
Lot No.: 2206688

SAMPLE INFORMATION

Sample Name: Sinensetin
Sample Type: Unknown
Vial: 74
Injection #: 1
Injection Volume: 10.00 ul
Run Time: 30.0 Minutes

Acquired By:
Sample Set Name
Acq. Method Set:
Processing Method: sample
Channel Name: PDA Ch1 288nm@4.8nm
Proc. Chnl. Descr.: PDA Ch1 288nm@4.8nm

Auto-Scaled Chromatogram



Peak Results

	Name	RT	Area	% Area	Height (μV)	USP Plate Count	USP Resolution
1		4.123	30516	0.28	6278	16946.47	
2		9.444	25006	0.23	2886	26495.42	29.39
3		10.603	10682860	99.27	1097158	27215.44	4.70
4		12.721	17750	0.16	1561	27283.66	7.36
5		14.383	5769	0.05	554	48705.12	5.59